

Yiddish Concert

SUNDAY, MARCH 13, AT 3:00 PM AT THE SYNAGOGUE

This is an exceptional opportunity to hear the original Yiddish music of David Botwinik performed by acclaimed singers Richard Lenatsky, tenor, and Lisa Willson, soprano, accompanied by pianist Elena Berman-Gantard. The concert celebrates David Botwinik's new book "From Holocaust to Life" (*Fun kburbn tsum lebn*). Also performing will be Alexander Botwinik, Dina Malka Botwinik, and Emma Gantard. Copies of the book will be available for purchase.

THE COMPOSER



David Botwinik was born in Vilna in 1920. As a young child, he would walk a long distance with his father on *Shabbat* and holidays to hear cantors at the largest synagogue in Vilna, the *shtotsbul*. By 11, he had already sung at several local synagogues, and he began composing soon after. At 18, he worked as a prompter in a Yiddish version of Verdi's "Aida." After the war, he helped transcribe songs that survivors had sung in the ghettos and camps, then went to Rome to study music in the renowned Santa Cecilia conservatory. In 1956, he emigrated to Canada and taught music and directed choirs for many decades in Montreal, where he still lives. In 2010, a collection of David Botwinik's original solo and choral compositions entitled, "From Holocaust to Life" (*Fun kburbn tsum lebn*) was published.

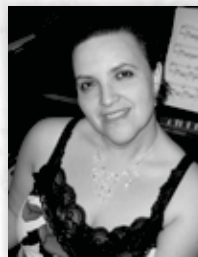
THE ARTISTS



Richard Lenatsky, a tenor who resides in West Chester, PA, has performed Yiddish songs in Philadelphia, New York, and Massachusetts. A friend and admirer of the great tenor Jan Peerce, Lenatsky studied voice with Alex Lorber, vocal coach to Peerce, Robert Merrill, and Roberta Peters.



Lisa Willson, soprano, has won praise for the beauty and purity of her voice. She was featured as soprano soloist in the PBS-televized Verdi's Requiem Mass, performed to commemorate the experience of Jewish concentration camp victims at Terezin. Trained at the Manhattan School of Music, Juilliard, and the Academy of Vocal Arts in Philadelphia, Willson has performed with the Philadelphia Chamber Orchestra, the Los Angeles Concert Opera, and many other national and international groups. Outside of classical music, she has been a lead singer with the Lionel Hampton Orchestra. She teaches voice in Bryn Mawr, PA.



Elena Berman-Gantard is assistant director of the Nelly Berman School of Music in Haverford, PA, where she teaches piano. She heard Yiddish songs as a child in Odessa, when her parents organized a concert, and hung carpets over the doors and windows to prevent neighbors and the authorities from hearing this "anti-Soviet activity." ■